

## DocuPen RC800 Colour Calibration Procedures

The DocuPen is factory calibrated and there should be no need to re-calibrate. We advise you to recalibrate only if you experience poor scan quality, e.g. scanned image appears in white or black - meaning that the color conversion tables have been lost. You can calibrate your DocuPen by either using the Paperport software or our stand-alone DocuPen Application. Both procedures are explained below:

### DocuPen RC800 Colour Calibration Procedure using Paperport

**Note:** Before starting the calibration procedure please make sure that you have downloaded our **latest DocuPen PenTwain drivers**. You can download the drivers from the following link: <http://www.planon.com/drivers.php>

**Note:** In order to perform the Calibration you also need to print out the **Calibration sheet**. You can download the file from the DocuPen CD or from the same link: <http://www.planon.com/drivers.php>. Please print the color calibration sheet on **photo** paper in **landscape** mode.

1. Connect the DocuPen to your computer using the USB cable.
2. Start the Paperport software. (Fig 1)
3. Press and hold the **left Shift and Ctrl keys** on your keyboard and then click the **Scan** button within the Paperport window. (Fig. 1) The **DocuPen Scanner Control** window will appear with the **Calibration** function enabled. (Fig. 2)
4. In the **DocuPen Scanner Control Window**, click on **Options** and select the **Calibration** function (Fig. 2). If you don't see the **Calibration** function please redo step 3.

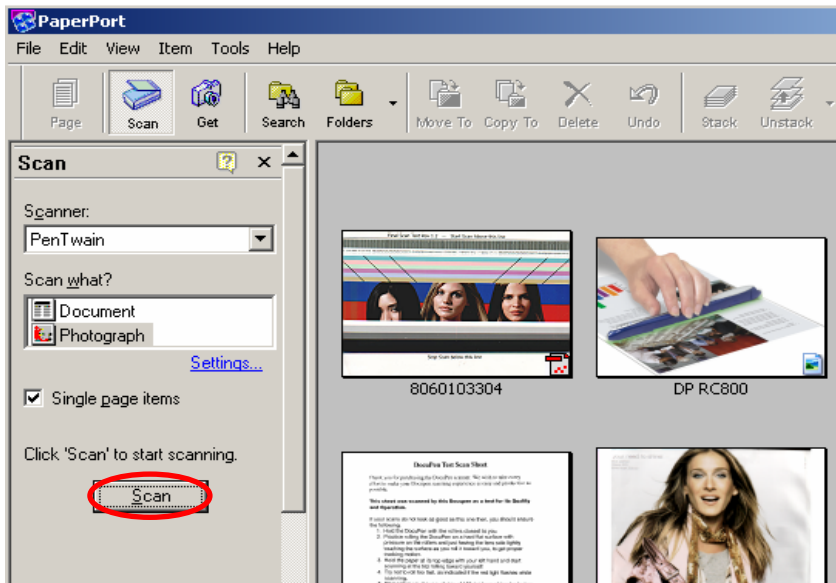


Fig 1

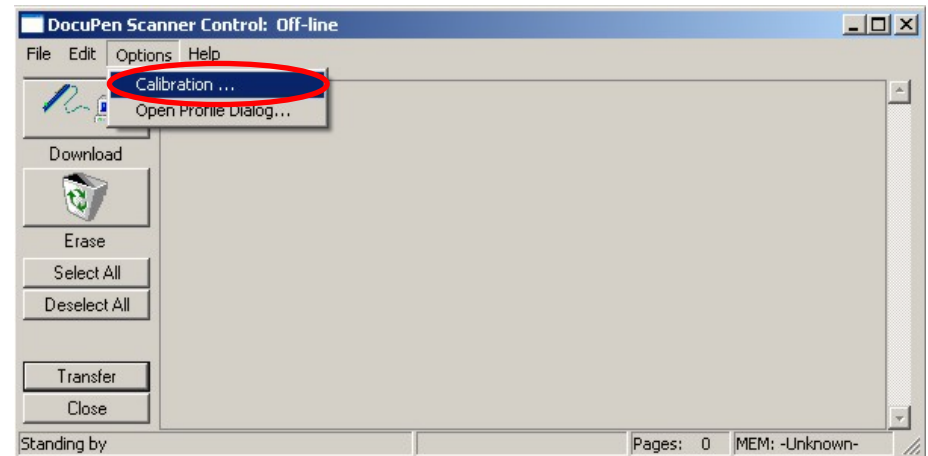


Fig 2

5. In the **Calibration Setup** dialog window – Select **Calibrate Color** and confirm by clicking the **OK** button (Fig. 3).

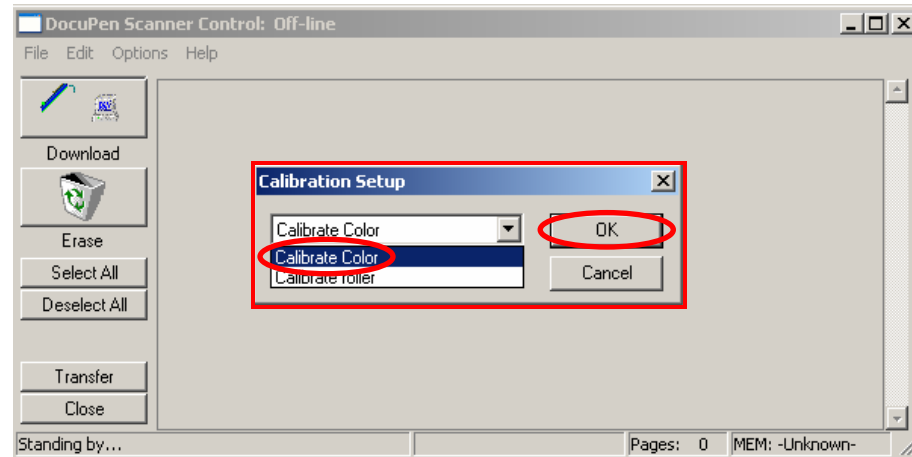


Fig 3

**NOTE:** The DocuPen memory will be formatted and all saved images will be lost.

6. You will be prompted to turn the DocuPen ON. Press the **Power On** button on your DocuPen and Click **OK** in the **PenTwain** Dialog window (Fig. 4).

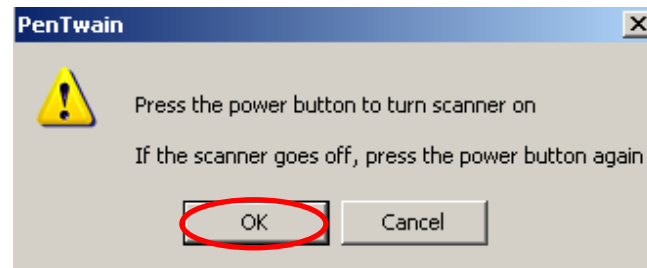


Fig 4

7. After the memory has been formatted the **Calibration scanning** dialog window will appear (Fig 5). Please **disconnect** the DocuPen from the USB cable and position it on top of the **Color Calibration** sheet. Please scan the sheet in **photo mode** and **high resolution**.

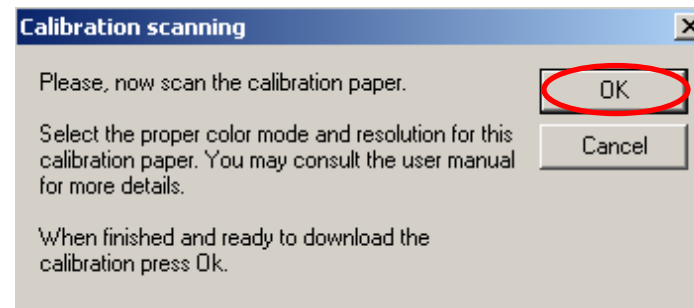


Fig 5

- The DocuPen will now save the Calibration image into memory. After the image is saved, please attach the DocuPen to the USB cable. Now press the **Power ON** button on the DocuPen and click the **OK** button within the **Calibration scanning** dialog window (Fig 5).
- The **Calibration result** dialog window will appear. You should see the calibration values to the left and a **Green OK** sign to the right (Fig 6).

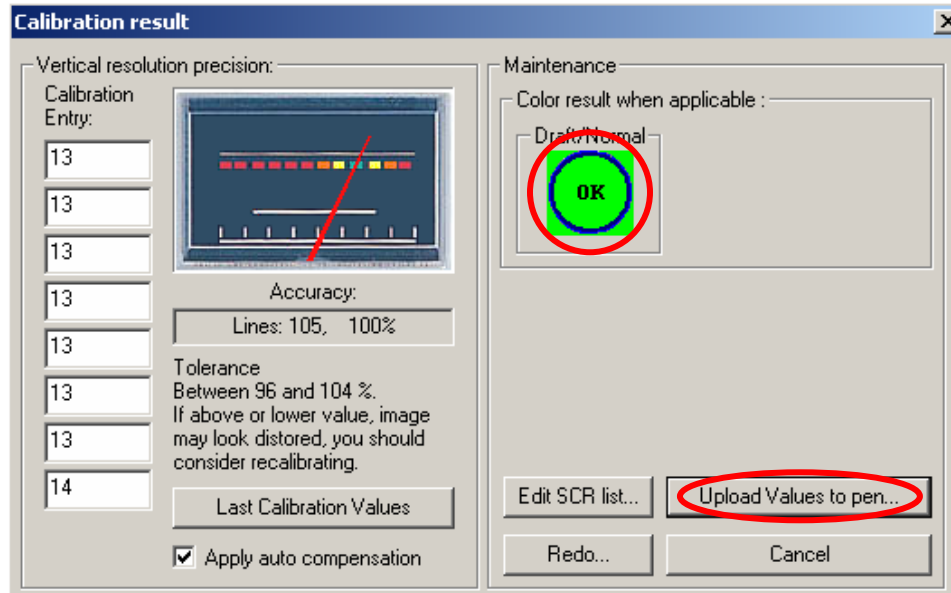


Fig 6

- Finally, click **Upload Values to pen** button in the **Calibration result** dialog window to send the calibration result to the DocuPen. You will be prompted to turn the DocuPen ON. Press the **Power ON** button on the DocuPen and click OK in the dialog window – this will store the new values.

**You have successfully recalibrated your DocuPen!**

**In case you have any questions or need further assistance don't hesitate to contact our Customer care:**

**docpensupport@planon.com**  
**TOLL FREE 1-877- DOCUPEN (1- 877- 362 87 36)**

**Planon System Solutions Inc**  
**5155 Spectrum Way, Unit 15**  
**Mississauga, ON L4W 5A1, Canada**  
**Phone ++1 905 507 39 26 Fax ++1 905 624 66 29**  
**E-mail: support@planon.com**  
**Website: [www.planon.com](http://www.planon.com)**

## DocuPen RC800 Colour Calibration Procedure using the stand-alone DocuPen Application

**Note:** Before starting the calibration procedure please make sure that you have downloaded our **latest DocuPen PenTwain drivers** and **DocuPen Application**. You can download from the following link: <http://www.planon.com/drivers.php>

**Note:** In order to perform the Calibration you also need to print out the **Calibration sheet**. You can download the file from the DocuPen CD or from the same link: <http://www.planon.com/drivers.php>. Please print the color calibration sheet on **photo** paper in **landscape** mode.

1. Connect the DocuPen to your computer using the USB cable.
2. Start the **DocuPen Application** with the **Calibration** function enabled – You can start the **DocuPen Application** by clicking on the **Start** button of your Windows Operating System then select **Programs**, then **Planon**. Now press and hold the **left Shift and Ctrl keys** on your keyboard and then click on **DocuPen** (Fig. 1) The **DocuPen Scanner Control** window will appear with the **Calibration** function enabled. (Fig. 2)
3. In the **DocuPen Scanner Control** window, click on **Options** and select the **Auto Calibration** function (Fig. 2). If you don't see the **Auto Calibration** function please redo step 2.

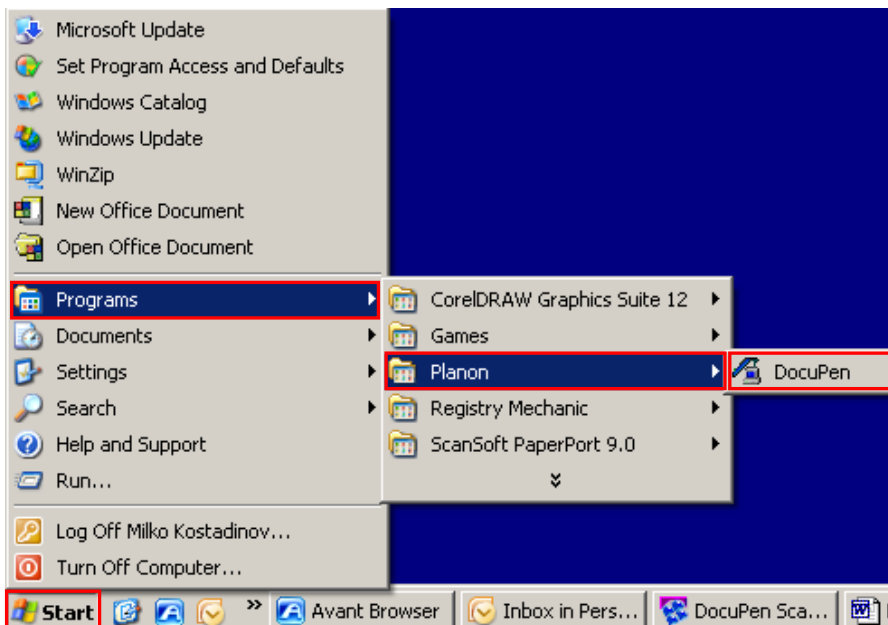


Fig 1

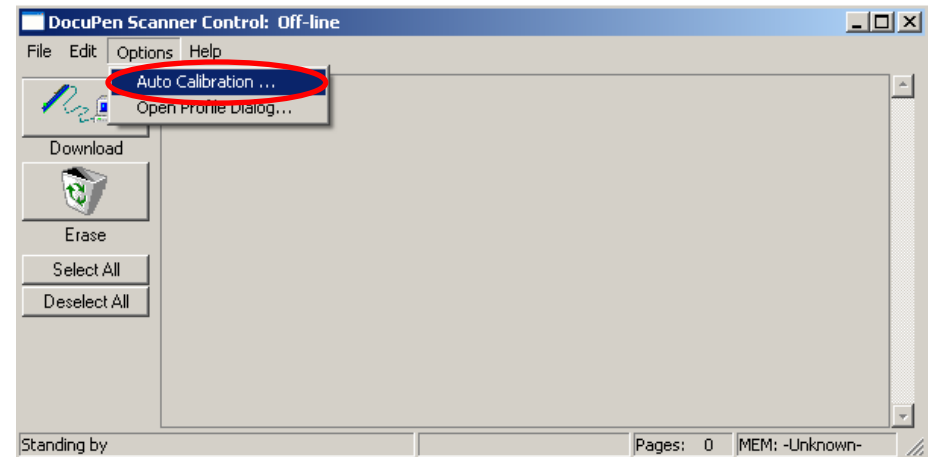


Fig 2

4. In the **Calibration Setup** dialog window – Select **Calibrate Color** and confirm by clicking the **OK** button (Fig. 3).

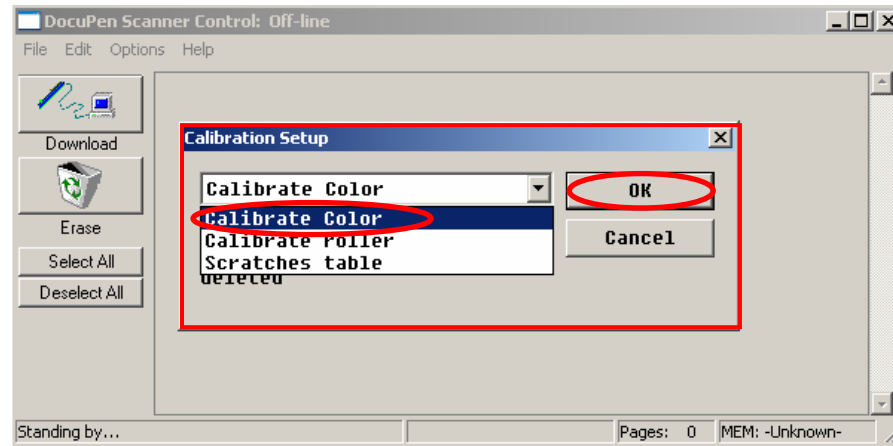


Fig 3

**NOTE:** The DocuPen memory will be formatted and all saved images will be lost.

5. You will be prompted to turn the DocuPen ON. Press the **Power On** button on your DocuPen and Click **OK** in the **PenTwain** Dialog window (Fig. 4).

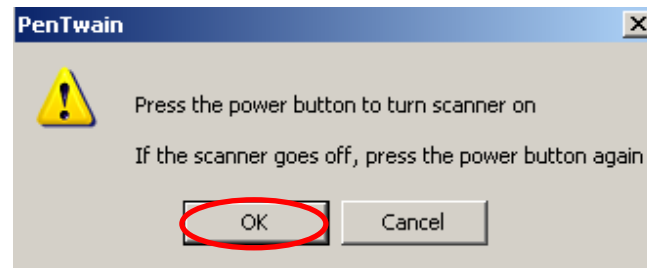


Fig 4

6. After the memory has been formatted the **Calibration scanning** dialog window will appear (Fig 5). Please **disconnect** the DocuPen from the USB cable and position it on top of the **Color Calibration** sheet. Please scan the sheet in **photo mode** and **high resolution**.

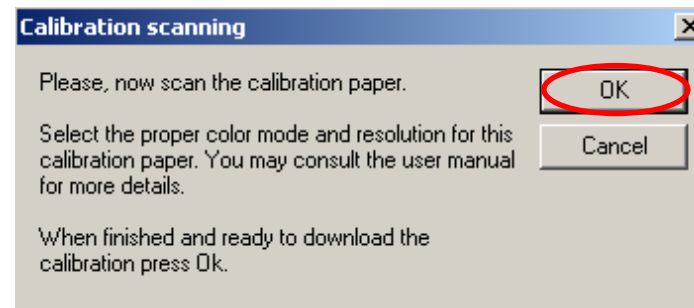


Fig 5

7. The DocuPen will now save the Calibration image into memory. After the image is saved, please attach the DocuPen to the USB cable. Now press the **Power ON** button on the DocuPen and click the **OK** button within the **Calibration scanning** dialog window (Fig 5).
8. The **Calibration result** dialog window will appear. You should see the calibration values to the left and a **Green OK** sign to the right (Fig 6).

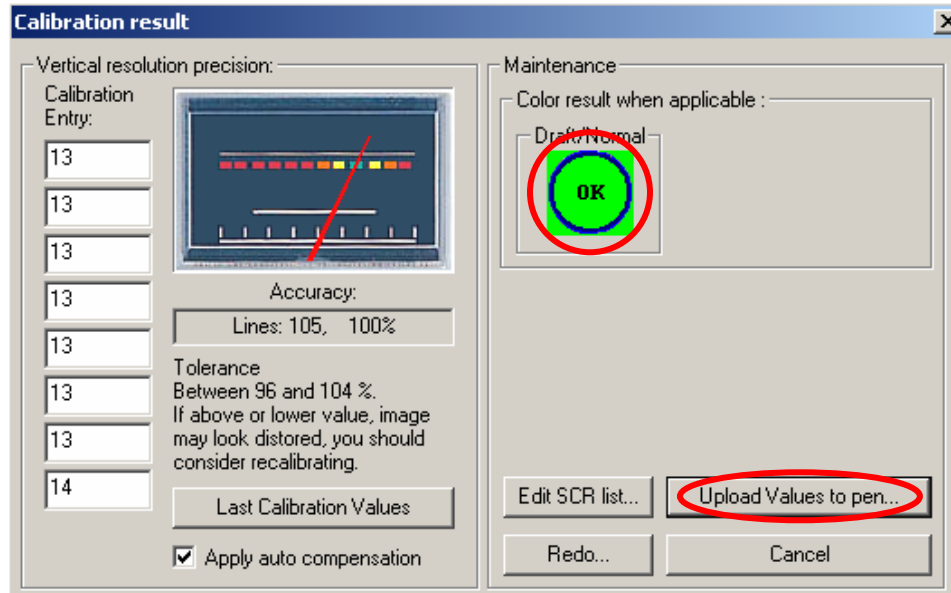


Fig 6

9. Finally, click **Upload Values to pen** button in the **Calibration result** dialog window to send the calibration result to the DocuPen. You will be prompted to turn the DocuPen ON. Press the **Power ON** button on the DocuPen and click OK in the dialog window – this will store the new values.

**You have successfully recalibrated your DocuPen!**

**In case you have any questions or need further assistance don't hesitate to contact our Customer care:**

**docpensupport@planon.com**  
**TOLL FREE 1-877- DOCUPEN (1- 877- 362 87 36)**

**Planon System Solutions Inc**  
**5155 Spectrum Way, Unit 15**  
**Mississauga, ON L4W 5A1, Canada**  
**Phone ++1 905 507 39 26 Fax ++1 905 624 66 29**  
**E-mail: support@planon.com**  
**Website: [www.planon.com](http://www.planon.com)**